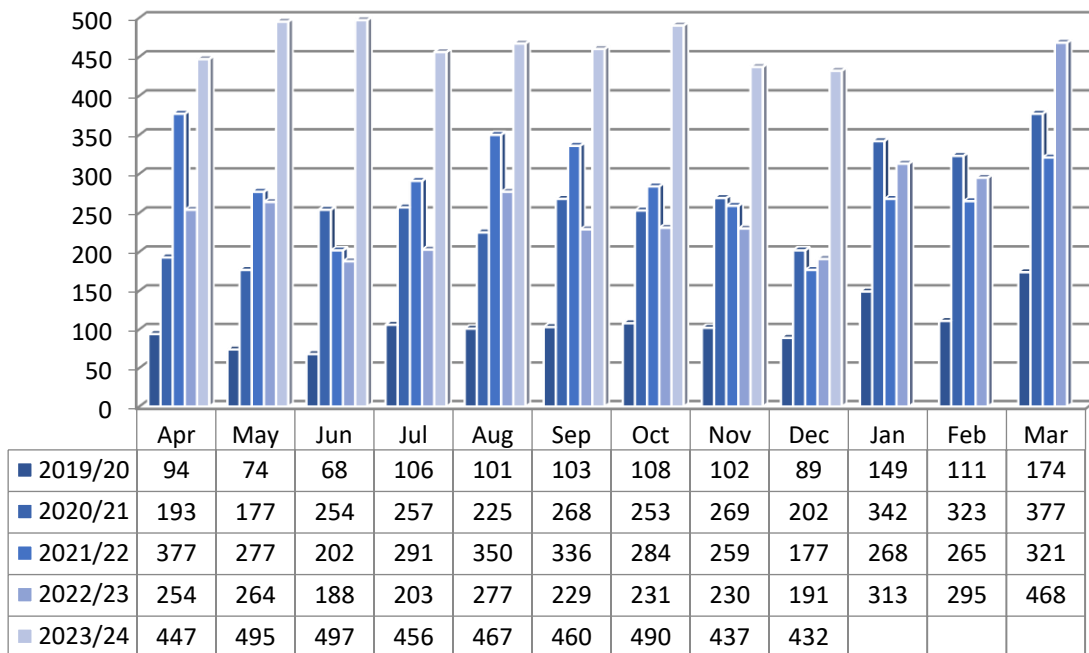
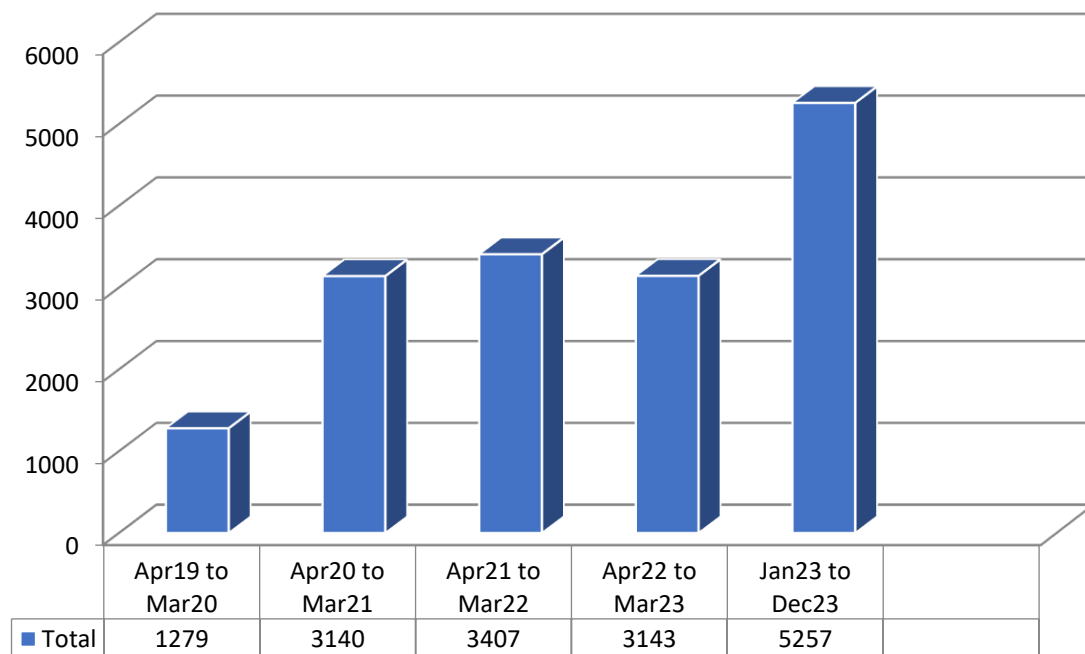


Fly tip data to the end of December 2023

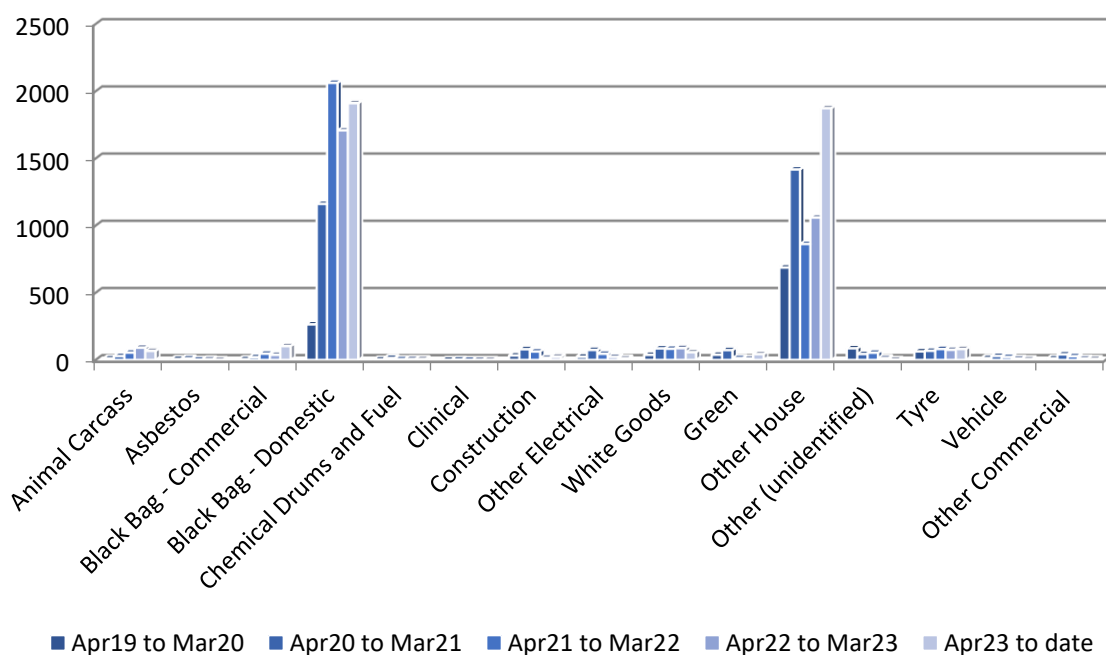
### Number of fly tip incidents (by month)



### Twelve month comparison of fly tip incidents

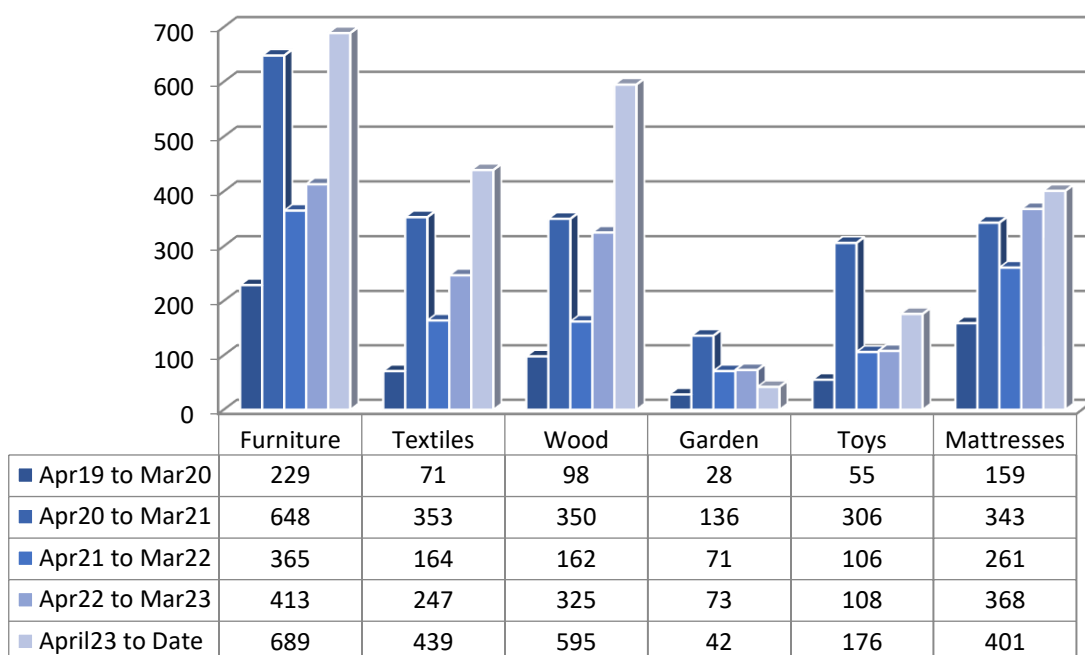


## Fly tip incidents by type



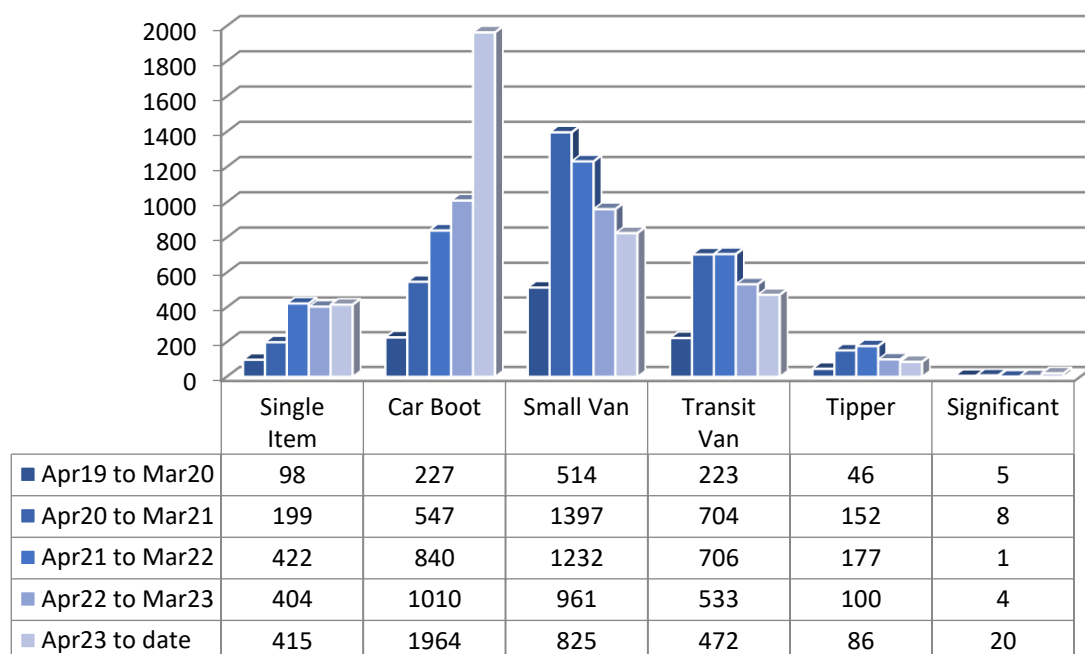
Primary Waste Type	Apr19 to Mar20	Apr20 to Mar21	Apr21 to Mar22	Apr22 to Mar23	Apr23 to date
Animal Carcass	11	28	54	90	66
Asbestos	6	11	2	4	0
Black Bag - Commercial	5	20	46	37	102
Black Bag - Domestic	264	1160	2061	1708	1910
Chemical Drums and Fuel	3	14	5	6	6
Clinical	0	2	0	0	0
Construction	32	79	62	15	23
Other Electrical	23	73	45	22	11
White Goods	37	85	82	87	56
Green	38	72	13	9	42
Other House	687	1417	862	1059	1873
Other (unidentified)	86	43	53	13	1
Tyre	63	67	80	74	80
Vehicle	13	29	21	9	5
Other Commercial	11	40	27	10	7

## 'Other household' items

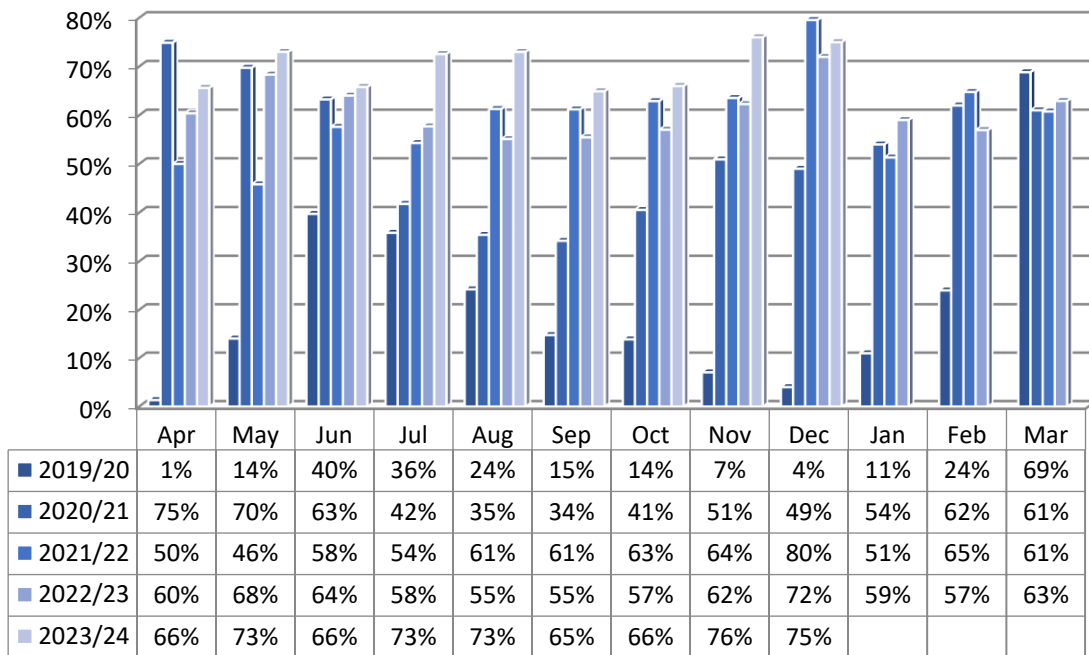


This does not correspond exactly to the number of 'other household' items overall because there maybe multiple types of items in one 'other household' incident.

## Fly tip incidents by volume



## Collection of fly tips on the same day



The above graphs shows those fly tips that are collected by the crew whilst patrolling identified Hot Spot Areas, these have not been reported by the general Public

## Collection of fly tips by target date (Within 3 Working Days)

